

# INTEGREX

www.integrex.co.uk  
+44 1283 551551  
sales@integrex.co.uk

## The SENse Range

2025





SCAN HERE

## ABOUT US

### SINCE 1969

Integrex stands as a premier UK designer and manufacturer of cutting-edge, interactive electronic and IT products. Our innovative solutions cater to a diverse range of sectors including Education, Care, Retail and Corporate environments. By integrating advanced technology with user-centric design, we aim to enhance learning experiences, improve care quality, streamline retail operations and boost Corporate efficiency.



The products have been fantastic and have met the very complex needs of the pupils within the school.



**Sandra Lee**

DL Coordinator, Sherwood Park School



Our **FREE** personalised consultation will help us design the ideal Sensory Room and environment, meeting all your requirements. From Bubble Tubes and Sensory Lights to Soft Padding and Interactive options, our bespoke offering is perfect for those seeking a tailored solution.

All prices exclude VAT and Delivery

Scan the QR Code above to book your **FREE** room consultation to ensure you make the best use of your space and budget.



# The Imagine Suite

## What Makes The Imagine Suite?

We designed The Imagine Suite software to provide an engaging, customisable and interactive platform for use on the SENSE Range of Interactive Projection. Its purpose is to enhance user engagement, foster creativity and promote physical, cognitive and social well-being through over **500** pre made activities and user generated content.



### YouTube Resources

Seamless access to pre-selected educational YouTube videos, fostering engaging and interactive learning experiences.



### Educational

Maths and Phonics content included for Key Stages 1 & 2.



### Ease of Use

Controlled with a single remote and featuring an intuitive interface, the Imagine Suite is thoughtfully designed to make creating your own activities effortless and enjoyable.



### Storybook

Create interactive visual stories enhancing creativity and storytelling.



### Measured Outcomes

The Imagine Suite enables the tracking of measured outcomes, providing valuable insights into engagement progress and achievements for users.



### Talk Out Loud

The Imagine Suite can read aloud any text displayed in an activity, enhancing accessibility and engagement for all users.



### Personalisation

With the Imagine Suite, you can personalise activities by adding your own media and creating individual user profiles for a tailored experience.



### Interactivity

Activities like Splat, Ball games and the Interactive Fishpond encourages movement, improve cognitive functions and provide sensory feedback.



### Create Once

The Creative Suite allows you to share your interactive resources with ALL devices connected to your account.



### Instant Activity Wizard

A simple quick way of creating personalised activities by downloading content to an external Memory Stick and plugging into the USB Slot.



### Realtime Adjustment

Using the Remote to instantly increase the speed and difficulty of certain activities.

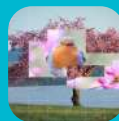
# The Four Areas of SEND

In the SEND Code of Practice, there are four broad areas of Special Educational Needs that should be identified and focused on within Educational settings. The Imagine Suite has been thoughtfully designed with these four areas as core principles, ensuring they are addressed through more than 500 integrated activities.

## Communication and Interaction

250+

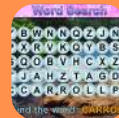
We have carefully designed over 250 combined activities to support users with Speech, Language and Communication (SLC) Needs, offering activities that range from Phonics development to group-based interaction.



## Cognition and Learning

280+

We have developed over 280 combined activities to support users with Cognition and Learning (CL) Needs, featuring activities such as Phonics to aid with Dyscalculia and word searches to assist with Dyspraxia.



## Social, Emotional and Mental Emotional Health

280+

We have created over 280 combined activities to support users with Social, emotional and Mental Health (SEMH) needs, including activities like Painting to promote concentration and group tasks to foster social interaction.



## Physical and/or Sensory Needs

300+

We have developed over 300 combined activities to support users with Physical and Sensory Needs, featuring activities such as card games to enhance gross motor skills and storybooks to promote engagement.



The Imagine Suite exemplifies how technology can address the unique challenges faced by individuals with Special Needs. It creates environments that promote independence, relaxation and meaningful interaction, benefiting not only the users but also their families and caregivers.

# SENse Interactive Projection

## The Benefits



### Enhanced Engagement and Motivation

SENse Interactive Projection captures attention through bright visuals, dynamic effects and gamified activities, making learning enjoyable and encouraging active participation. This helps learners stay focused and motivated.

### Develops Communication and Social Skills

By promoting group activities and collaboration, SENse Interactive Projection fosters social interaction and teamwork. It also encourages decision-making and self-expression, which supports communication development.



### Provides Sensory Stimulation and Regulation

Customisable sensory experiences help create calming or stimulating environments tailored to individual needs. This can be particularly beneficial for learners with sensory processing challenges.

### Builds Motor and Cognitive Skills

Interactive activities require physical movement, improving fine and gross motor skills and coordination. They also stimulate cognitive development through problem-solving, critical thinking and memory-enhancing tasks.



### Tailors Learning to Individual Needs

Content can be adapted to suit each learner's abilities, pace and goals, making SENse Interactive Projection a highly inclusive tool. Its versatility allows for cross-curricular applications, supporting a range of subjects and skills.

### Promotes Inclusion and Accessibility

SENse Interactive Projection tools are designed to be accessible, ensuring all learners, regardless of ability, can participate. They create an inclusive environment that fosters meaningful interactions and a sense of belonging.



SENse Interactive Projection is ideal for Sensory Rooms, Classrooms and Therapy settings, offering a safe, stimulating and transformative way to support individuals with SEN in reaching their full potential.

# SENse Flex+



SCAN HERE



## Accessible

The Flex+ ensures accessibility with electronic height adjustability and supports Interactive Projection on Walls, Floors and Tables.



## Imagine Suite

Complete with the Imagine Suite, offering a wide range of interactive activities and customisation options when using the **FREE** Creative Suite. **Learn more on page 2**



## Augmented Reality

Activate augmented reality mode for a magic mirror effect, immersing yourself from a distance. Step back, see yourself in the activity and interact with engaging experiences.



## Multi Player

The Flex+ encourages larger group activities with a bright and expansive projection area of up to 2.9m x2.2m.



## Hand Tracking

The Flex+ uses advanced contactless hand-tracking technology, you can control activities from a distance. Simply move your hands to engage with a range of interactive experiences.



Price

**£7995**  
+VAT





# SENse Flex



SCAN HERE



## Accessible

The Flex ensures accessibility with electronic height adjustability and supports Interactive Projection on Floors and Tables.



## Imagine Suite

Complete with the Imagine Suite, offering a wide range of interactive activities and customisation options when using the **FREE** Creative Suite. **Learn more on page 2**



## Movement Tracking

Movement tracking for Interactive Projection detects even the slightest movements, allowing users with minimal mobility to engage in activities. This technology enables individuals to interact with the projection through subtle gestures or motions, providing an inclusive and accessible experience that encourages participation, sensory stimulation and movement.



## Multi Player

The Flex encourages larger group activities with a bright and expansive projection area of up to 2.9m x2.2m.

Price  
**£5995**  
+VAT



# SENse Mini



SCAN HERE



## Portable

The Flex Mini is Portable, innovative and exciting! This mobile, lightweight option turns any space into a magical sensory floor projection, capturing the attention of all ages.



## Movement Tracking

Movement tracking for Interactive Projection detects even the slightest movements, allowing users with minimal mobility to engage in activities. This technology enables individuals to interact with the projection through subtle gestures or motions, providing an inclusive and accessible experience that encourages participation, sensory stimulation and movement.



## Imagine Suite

Complete with the Imagine suite, offering a wide range of interactive activities and customisation options when using the **FREE Creative Suite**. **Learn more on page 2**



## Multi Player

The Flex Mini can be used for one on one or smaller group sessions with a projection size of 1.2m x 0.9m

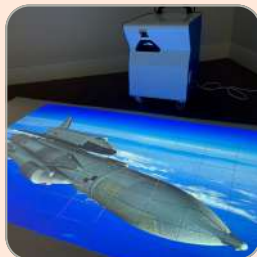
SENse Flex Mini



Price

**£4500**

+VAT





# SENse Micro



SCAN HERE



## Accessible

The Micro ensures accessibility with its optional Trolley and supports Interactive Projection on Walls, Floors, Tables and non interactive ceiling projection.



## Imagine Suite

Complete with the Imagine suite, offering a wide range of interactive activities and customisation options when using the **FREE** Creative Suite. **Learn more on page 2**



## Movement Tracking

Movement tracking for Interactive Projection detects even the slightest movements, allowing users with minimal mobility to engage in activities. This technology enables individuals to interact with the projection through subtle gestures or motions, providing an inclusive and accessible experience that encourages participation, sensory stimulation and movement.



## Multi Player

The SENse Micro encourages group interaction or can be used on a one-to-one basis easily moved from room to room.



## Portable Pro

Battery-powered Interactive Projection offers the flexibility to be used anywhere, without the need for a power outlet, making it ideal for portable and adaptable therapeutic sessions in various environments.

## Enhancements

### Portable Stand

+ £300

### Portable Pro Stand

+ £1150

Price From

**£2645**

+VAT



# SENse Tile



SCAN HERE



## Easy Installation

The SENse Tile is a seamless addition to a suspended ceiling, an unobtrusive and user-friendly Interactive Floor without the need for a complex installation.



## Imagine Suite

Complete with the Imagine suite, offering a wide range of interactive activities and customisation options when using the **FREE** Creative Suite. **Learn more on page 2**



## Movement Tracking

Movement tracking for Interactive Projection detects even the slightest movements, allowing users with minimal mobility to engage in activities. This technology enables individuals to interact with the projection through subtle gestures or motions, providing an inclusive and accessible experience that encourages participation, sensory stimulation and movement.



## Multi Player

The SENse Tile encourages larger group activities with a bright and expansive projection area of up to 2.6m x 1.7m



# SENse Air



SCAN HERE



## Easy Installation

The SENse Air is a seamless addition to a suspended ceiling, an unobtrusive and user friendly Interactive Floor without the need for a complex installation.



## Imagine Suite

Complete with the Imagine suite, offering a wide range of interactive activities and customisation options when using the **FREE** Creative Suite. **Learn more on page 2**



## Movement Tracking

Movement tracking for Interactive Projection detects even the slightest movements, allowing users with minimal mobility to engage in activities. This technology enables individuals to interact with the projection through subtle gestures or motions, providing an inclusive and accessible experience that encourages participation, sensory stimulation and movement.



## Multi Player

The SENse Air encourages larger group activities with a bright and expansive projection area of up to 2.2m x 1.7m.

Price

**£4995**

+VAT



# How To Order



SCAN HERE

Ordering from Integrex Limited is simple and tailored to your needs. For Sensory Rooms and Immersive Environments, we offer personalised consultations either onsite or via Teams to ensure your space is optimally designed and equipped. For products such as the SENSE range and Interactive Screens, you can conveniently place your order online through our Website. We also accept purchase orders from local authorities, the NHS, and other organisations, providing a seamless process for public sector and large-scale projects. Our Team is here to guide you every step of the way to create the perfect Sensory or Immersive Environment.



## Online Ordering

To place an order online, add the product to your basket. When you have finished shopping, process to the checkout and pay with a card. Some products are only available to purchase via email or telephone, if the “buy it now” option isn’t available, please contact Integrex using one of the methods listed below.



## Ordering by Telephone

Orders can be accepted over the telephone provided an official order number is given and a confirmation email is received. Please call the Sales Team on +44 1283 551551



## Ordering by Email

Please send purchase orders to [sales@integrex.co.uk](mailto:sales@integrex.co.uk), including the item, quantity, description and quotation number (if applicable). For Health and Education Authority orders, please specify the invoice address, payment responsibility, full delivery address and contact details.



Our **FREE** personalised consultation will help us design the ideal Sensory Room and Environment, meeting all your requirements. From Bubble Tubes and Sensory Lights to Soft Padding and Interactive options, our bespoke offering is perfect for those seeking a tailored solution.

All prices exclude VAT and Delivery

Scan the QR Code above to book your **FREE** room consultation to ensure you make the best use of your space and budget.





[www.integrex.co.uk](http://www.integrex.co.uk)

+44 1283 551551

[sales@integrex.co.uk](mailto:sales@integrex.co.uk)

Portwood Industrial Estate

Church Gresley

Swadlincote

Derbyshire

DE11 9GL

# The SEND Collection

